



# **Fix-'er-Up**

## **Leveraging Resources**

Gila County Community Services  
“A Community Action Program”

# Gila County

- 4,752 Square Miles
- Population = 52,400
- Elevation ranges from 7,500 to 1,500
- Gila County the majority of homes were built in the early 1900's these are made up of mostly stick built at least 50% of these are cooled by evaporative coolers with heating being forced air gas furnaces or space heaters.

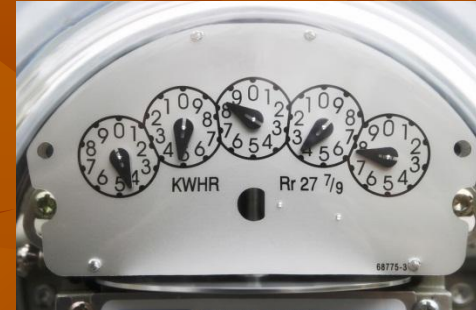


# Housing Funds

- DOE – Department of Energy
- LIHEAP- Low Income Home Energy Assistance Program
- AZ Public Service WAP
- Southwest Gas Corp. WAP
- Pinal-Gila Council for Senior Citizens
- C.D.B.G. – Community Development Block Grant
- U.R.R.D. – Utility, Repair, Replacement & Deposits
- Salt River Project/WAP
- AZ Public Service/Solar Hot Water Heater Program
- HOME Partnership Program

# Education

- ❖ In-home Energy Education
- ❖ Home Maintenance Education



# Testing





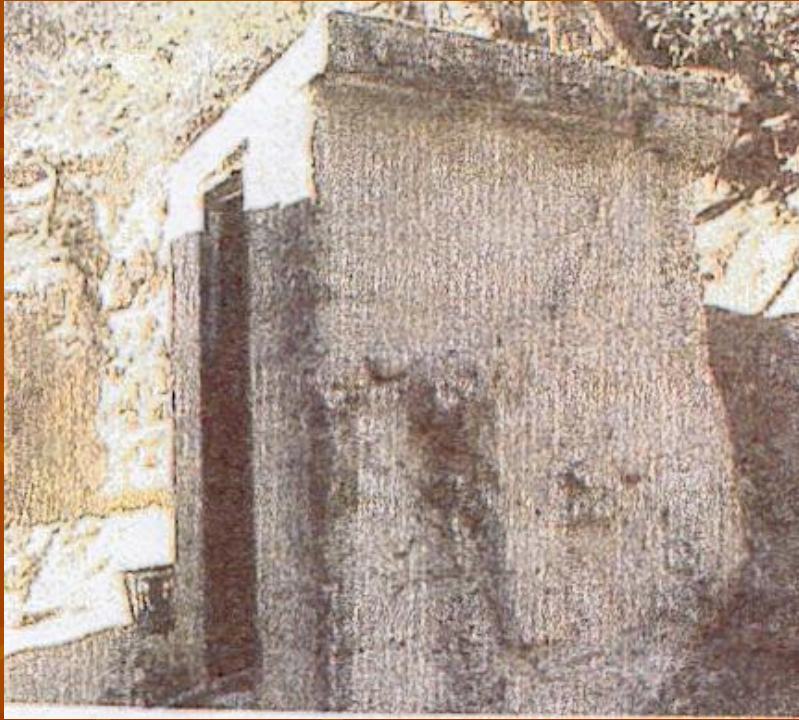


# Before & After Pictures

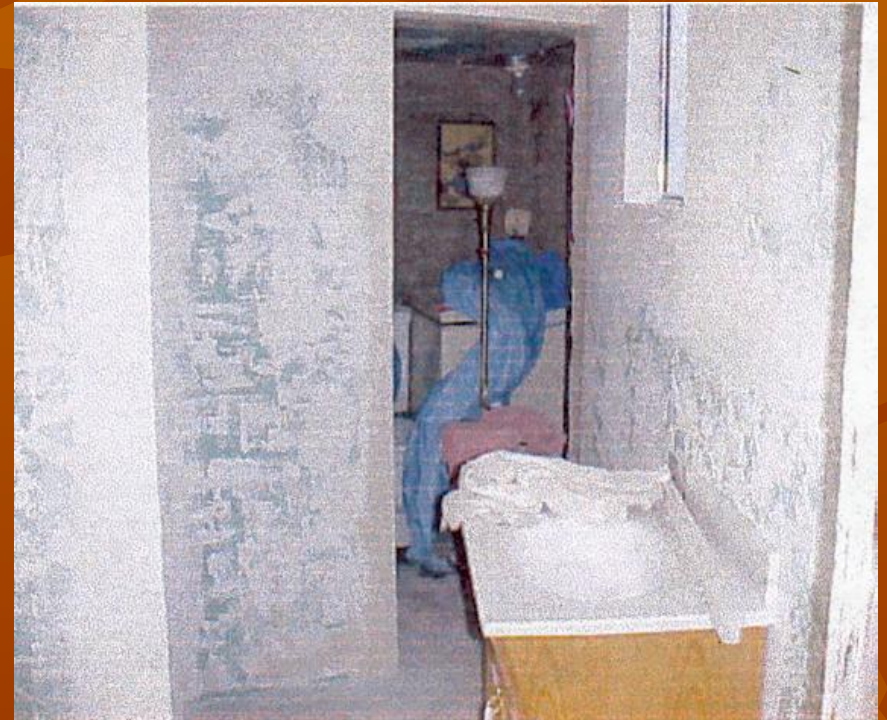








Before – Out house



After – New bath  
attached to main home















































# Solar Hot Water Heaters



# In Closing

Leveraging is vital to the rural housing programs as it enables us to perform most all of the necessary measures to ensure the health, safety, independence, energy efficiency and comfort of the homeowners.